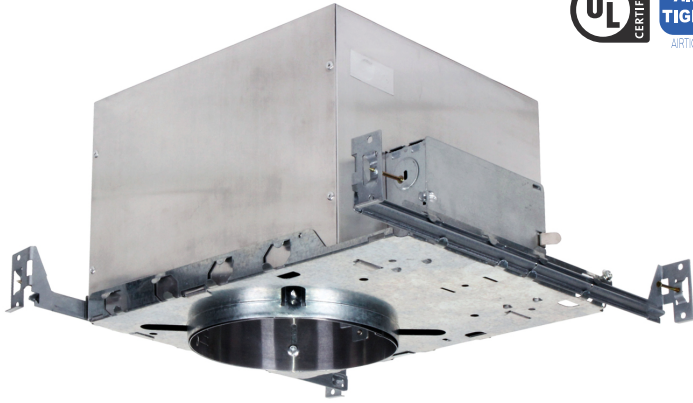
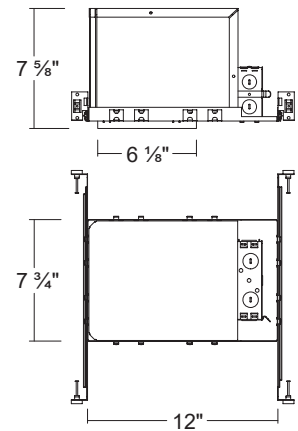


H300ICA

6" IC Air-Tight Incandescent Double-Wall New construction Housing (Max. 100W)



Dimensions



ORDERING INFORMATION

Model No.	Description
H300ICA	6" IC Air-Tight Incandescent Double-Wall New construction Housing (Max. 100W)

SPECIFICATION

Housing

- Double wall aluminum construction

Plaster Frame

- Galvanized steel construction. The housing can be removed from plaster frame to provide access to the junction box

Junction Box

- Listed for through branch circuit wiring
- Contains seven 7/8" knockouts and four Romex pryouts with strain relief

Bar Hanger

- Pre-installed Real nail easily installs in regular lumber, engineered lumber
- Bar Hangers are adjustable from 13-5/8" to 25" and can be repositioned 90 degree on plaster frame

Thermal Protector

- Self resetting thermal protector deactivates fixture if overheating occurs due to improper lamping or misapplied insulation.

Listings

- cULus Listed for Damp Location
- cULus Listed for Feed Through
- Certified under ASTM-E283 for Air tight construction

COMPATIBLE TRIMS

T603 Stepped Baffle



- **Incandescent**
75W R / Par30

T691 Open Baffle Trim



- **Incandescent**
75W R / Par30

T630 Smooth



- **Incandescent**
75W R / Par30

T645 Wall Wash Baffle



- **Incandescent**
75W BR / Par30

T605 Eyeball



- **Incandescent**
75W R / Par30

T619 Cone Smooth



- **Incandescent**
100W A19